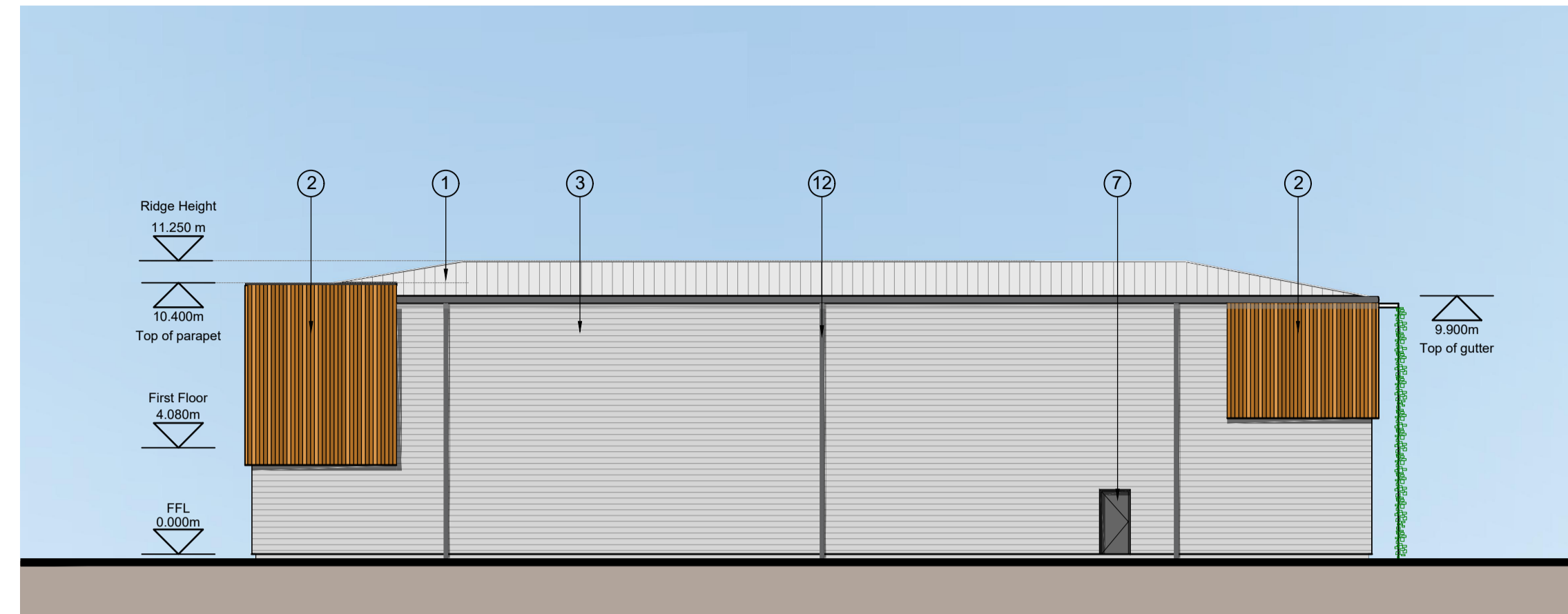


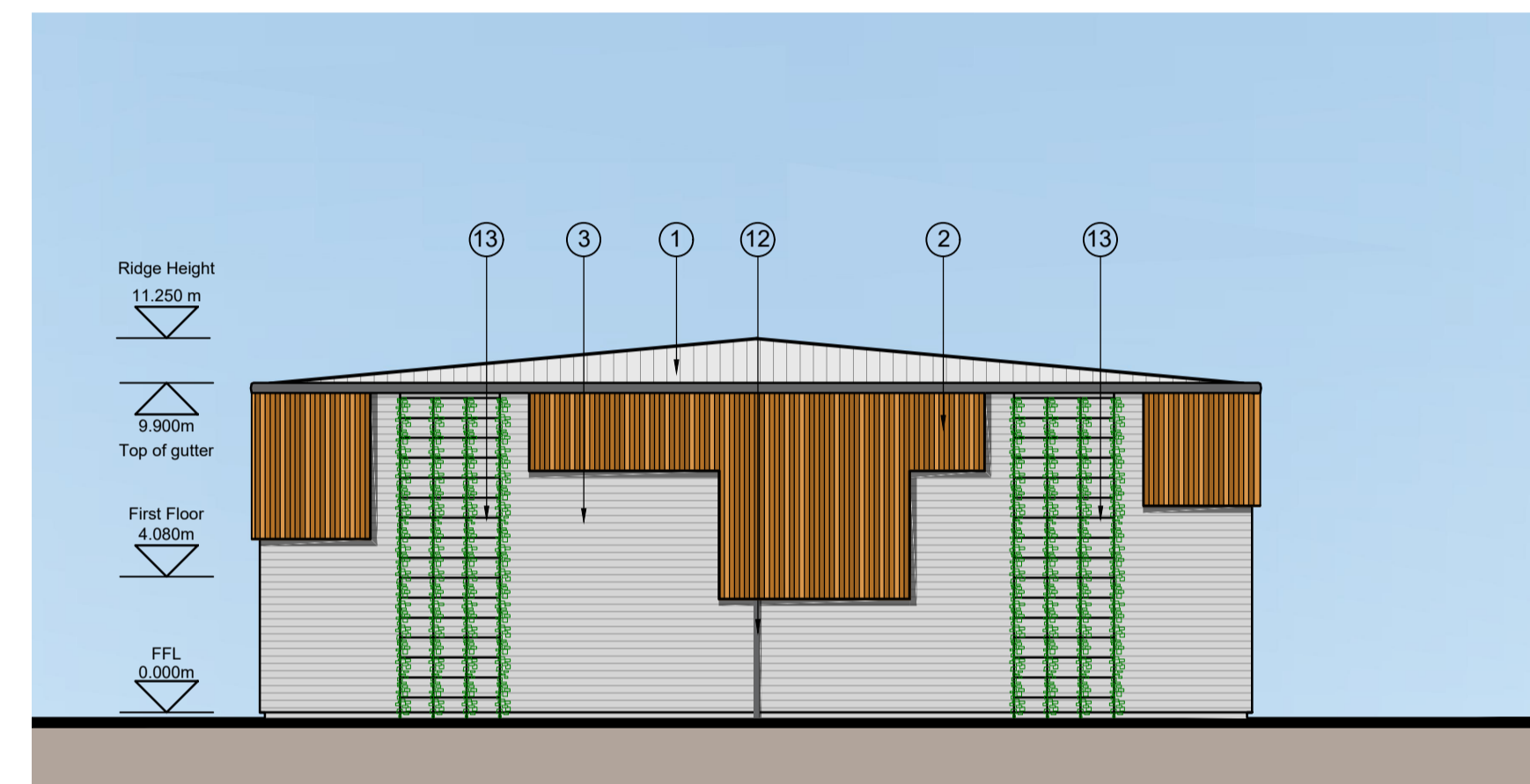
NORTHERN ELEVATION



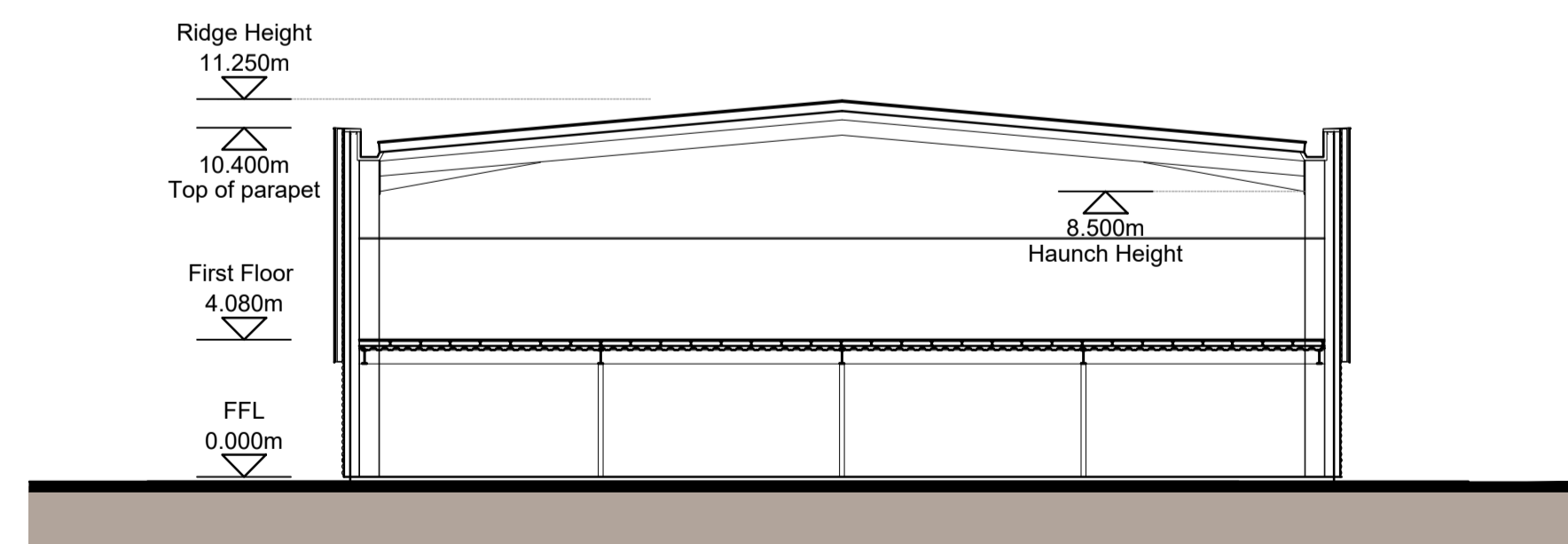
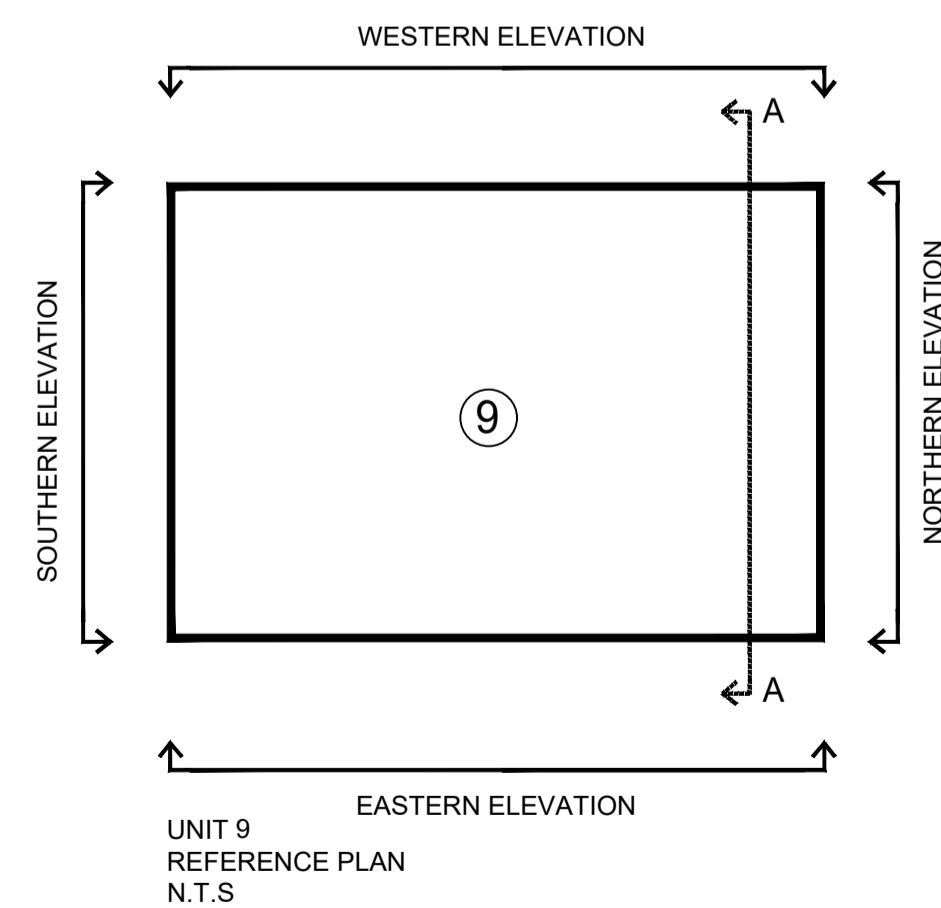
WESTERN ELEVATION



EASTERN ELEVATION



SOUTHERN ELEVATION



UNIT 9 SECTION AA

- MATERIALS KEY**
- ① PROFILED ROOF CLADDING (GOOSEWING GREY RAL 7038)
  - ② SIBERIAN LARCH CLADDING
  - ③ HORIZONTAL ARC PROFILE CLADDING (METALLIC SILVER RAL 9006)
  - ④ ALUMINIUM FRAMED WINDOWS (ANTHRACITE RAL 7016)
  - ⑤ ALUMINIUM FRAMED ENTRANCE DOORS AND FULL HEIGHT GLAZING (ANTHRACITE RAL 7016)
  - ⑥ LOADING BAY DOORS (ANTHRACITE RAL 7016)
  - ⑦ STEEL PERSONNEL DOORS (ANTHRACITE RAL 7016)
  - ⑧ STEEL BOLLARD (GREEN RAL 6018)
  - ⑨ MAIN ENTRANCE BRISE-SOLEIL
  - ⑩ SIGNAGE ZONE, INDICATIVE
  - ⑪ BACKLIT ILLUMINATED ALUMINIUM UNIT NUMERAL (RAL 6018 FACE)
  - ⑫ ALUMINIUM RAINWATER GOODS (ANTHRACITE RAL 7016)
  - ⑬ GREEN WALL

Client:  
HE2 READING 1 GP LTD (LONDON)



Project:  
HEADLEY ROAD EAST  
WOODLEY

12 Warren Yard,  
Warren Park,  
Milton Keynes,  
MK12 5HW  
01908 305 246

info@prc-group.com  
www.prc-group.com

Drawing Title:  
UNIT 9  
PROPOSED ELEVATIONS  
& SECTION

Architecture  
Planning  
Master Planning  
Urban Design  
Interiors  
Landscape

Scale @ A1: 1:200  
Checked by: JR  
Date: SEPT 21

Job No: 11359  
Stage: PL 123  
Drawing No: A  
Rev: A

Issue Status:  
Construction  Preliminary   
Information  Approval   
Tender

Offices  
Woking  
London  
Milton Keynes  
Warsaw

This page is intentionally left blank